

Save time and reduce errors when you electronically import your labor into Abra Suite Payroll.

MAKE INTEGRATION EASY

- **No need to change software just to achieve integration.** BASpay Labor Interfaces are designed to link data from many timekeeping, point of sale, shop floor, and data collection systems to Abra Suite Payroll, allowing you to transfer information without purchasing new software systems.
- **BAS offers labor interfaces from various timekeeping systems, including:**
 - ✓ ADI Standard Time for Windows
 - ✓ Amano Cincinnati's TruTime
 - ✓ Aurora 7 from BST Consultants
 - ✓ InfoTronics Attendance Professional for Windows
 - ✓ Jantek Time and Attendance Systems
 - ✓ Kronos TimeBank and Timekeeper Central
 - ✓ Lathem Time
 - ✓ Qqest Software's ETC Gold Suite
 - ✓ Simplex WinSTAR
 - ✓ Stromberg Jason Time Manager
 - ✓ TimeClock Plus from DMI
 - ✓ TimeTrak Systems
 - ✓ TimeWolf by Lone Wolf Software
 - ✓ Unitime Systems
- **BAS offers labor interfaces from various vertical market systems, including:**
 - ✓ Advantage Energy Software Retail / 2000
 - ✓ Avante ERP Software by Epicor
 - ✓ DARA² Shop Floor by National Metal Fabricators
 - ✓ Encompix ERP Software
 - ✓ Hansen's FieldWORKS
 - ✓ Matchmaker Staffing Industry Software
 - ✓ PDI / RMS by Professional DataSolutions Inc.
 - ✓ PRIMAC Shop Floor IS by Vercom Software
 - ✓ ProCare Childcare Management Software
 - ✓ Software Assurance Corp's StoreMaster
 - ✓ Solomon IV Project Series Timekeeper

This list is frequently updated, so please contact BAS to see if we've added your data collection system since the last printing. BAS is happy to write custom interfaces to your internally developed systems too.

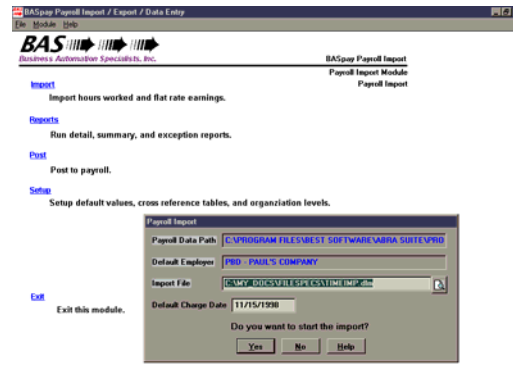
- **BASpay Labor Interfaces are easy to use.** They require minimal setup and operate outside your timekeeping and payroll software so they do not create conflicts. Labor data can be imported, audited for correctness, and posted to payroll in minutes with our easy 16-bit and 32-bit Windows linking applications.

MAINTAIN DATA COMPATIBILITY

- **Cross-reference tables convert unique data** into a format that Abra Suite Payroll™ can accept. Standard interface utilities allow you to translate time clock activity or pay codes into Abra Payroll earnings codes, and time clock company codes into Abra Payroll employer codes. Translating job codes, shift codes, divisions, departments, and all organization levels can be done in the standard version as well. If needed, specialized versions can be developed with additional cross-referencing to ensure a smooth data transfer.

FIND ERRORS BEFORE THEY ARE IMPORTED TO PAYROLL

- **Exception reports identify problems** like unrecognized employee records, department codes or earnings codes. You can correct these errors before transferring the data to payroll for final processing. This way, only correct, valid data reaches payroll.



Task Screen from a BASpay Labor Interface

SAVE TIME AND REDUCE MISTAKES

- **Save time and reduce the risk of human error.** With a BASpay interface, labor transactions created by your labor system are moved in a batch to payroll, saving valuable time and eliminating keying errors.

INCREASE PERFORMANCE WITH OPTIONS

- **Bi-directional linking updates your Timekeeping Software too.** Maintain database consistency between payroll and your labor system. Enter newly hired employees and changes to existing employees into payroll and then export this personnel information to the labor system with the Personnel Export option.

Additional product information is available on the BAS website at <http://www.BASpay.com>.