

Administer multiple wage garnishments and tax levies, and stay in compliance with the latest federal and state regulations using BASpay Wage Garnishment and Abra Suite Payroll.

AUTOMATE PROCESSING

- **Stop the hassle of manually calculating the withholding amounts for garnishments.** BASpay Wage Garnishment will automatically withhold garnishments based on the maximum withholding amounts you set. You can set maximum values for the total amount of disposable income available for withholding, set maximums per garnishment, and designate overall percentage maximums.
- **Save time and avoid errors** by transferring the corrected garnishment withholding amounts directly into your payroll system without recalculating or re-keying.

SATISFY GOVERNMENT REGULATIONS

- **Comply with federal and state maximums.** BASpay Wage Garnishment allows you to set the following criteria for each garnishment deduction code and/or tax levy:
 - ✓ Maximum allowable garnishment %
 - ✓ Garnishment type
 - ✓ Withholding priority
 - ✓ Arrears code that should be used if the full amount is not available
 - ✓ Overall maximum withholding limit
 This level of detail allows the user to control exactly how much money is withheld and the order they are withheld in, providing easy compliance with court orders.
- Each creditor garnishment is tested individually to be sure the amount does not exceed 25% of disposable pay or 30 times the minimum wage.
- For child support garnishments, you can specify the maximum percentages in setup so the program can easily support orders that require 50%, 55%, or 60% of disposable pay. Of course, if any of these limits exceed the overall maximum, they will be reduced.

- **Control the order in which garnishments are withheld.** Since the withholding priority can change depending on the order that each garnishment is received for each employee, BASpay Wage Garnishment lets you designate the order.

COMPLETE INTEGRATION WITH ABRA SUITE

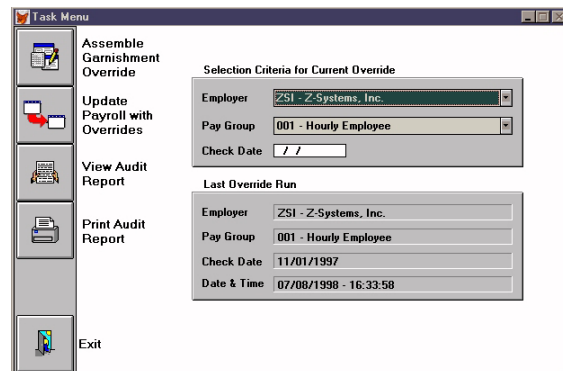
- BASpay Wage Garnishment reads information from the current period timesheet file in Abra Suite Payroll after Trial Payroll has been run. It calculates the correct garnishment amounts based on the rules that have been specified in program setup, and posts the correct amounts back to Abra. Then you're ready to run Final Payroll with no additional hassles.

MAINTAIN ANY TYPE OF GARNISHMENT

- Child Support and Arrears Garnishments
- Creditor Garnishments
- Federal and State Tax Levies
- Bankruptcy Orders

AUTOMATICALLY ACCUMULATE ARREARS

- If there is not enough money available in an employee's disposable earnings to satisfy all garnishment orders, the amount that cannot be withheld can automatically post to an arrears code, so you can try to withhold that money in your next pay cycle.
- The same kind of limits can be set for your arrears codes as for regular garnishment deductions, so you can be sure they will be withheld in the correct order and amounts.



BASpay Wage Garnishment Task Menu

For more information about BASpay Wage Garnishment, visit our website at www.BASpay.com or call Business Automation Specialists, Inc. at 727-866-2122.